

Comfortland

2020

PRODUCT GUIDE
COMFORTLAND MEDICAL



WWW.COMFORTLANDMED.COM



More Comfort, Better Performance.

Comfortland Medical is an innovative manufacturer and distributor of medical equipment, specializing in the production of orthopedic bracing and soft goods. Each Comfortland product exists in response to real needs based on the advice and input of clinicians and healthcare experts. In the fast-paced healthcare industry, our goal is to provide quality equipment and top-notch customer service, allowing our customers to concentrate fully on patient care.

We are constantly searching for ways to lower the cost of doing business so that we can pass the savings on to our customers. In the effort to continuously improve business relations, we value and appreciate feedback on our products and services. All concerns are carefully reviewed by the Comfortland team and are used to help us continue in producing the best products possible while keeping our prices both affordable and competitive. Our customer base is very important to us, and we look forward to hearing from you.



CONTENTS

SPINE

Lumbar and Thoracic Bracing	2
Spinal Miscellaneous	14
Cervical Bracing and Traction	18

LOWER EXTREMITY

Hip Bracing	22
Knee Bracing	24
Walkers and Night Splints	34
Ankle Bracing	38
Comfortstep Orthotics	44
Compression Stockings	51

UPPER EXTREMITY

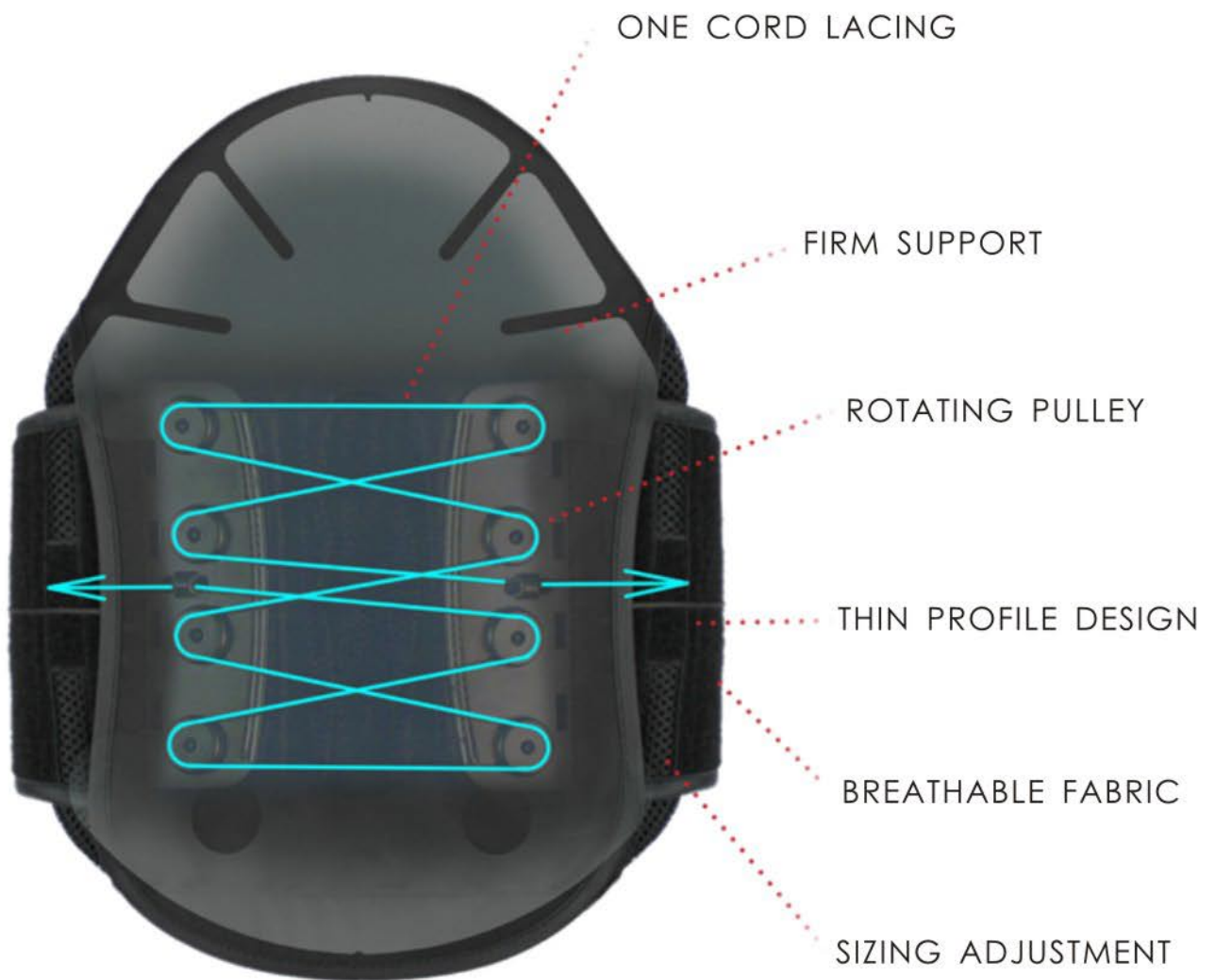
Hand and Wrist Bracing	56
Elbow Bracing	59
Shoulder Bracing	59

SPECIAL INTEREST


Hot/Cold Therapy	64
Electrotherapy	65
Retail Lumbar Bracing	67
Retail Knee Bracing	67
Retail Ankle Bracing	67

DELTA

EXCLUSIVE SINGLE CORD TIGHTENING SYSTEM
MAXIMUM COMPRESSION WITH MINIMUM EFFORT



WE HAVE YOUR BACK



Our rotating pulley system, combined with a unique single cord design, improves the mechanical advantage for the same level of compression by 20% or more over that of the competition. A flexible yet firm posterior panel conforms to the body when brace is tightened. Each turn of the lacing system is a full rotation of the pulley, reducing friction for easy tightening and compression.

DELTA UNIVERSAL LSOs AND TLSOs

Designed for patients with **spinal instability, spinal stenosis, or chronic back pain**, Comfortland's Delta line is the perfect combination of comfort and support. This line offers practitioners cost-effective LSOs and TLSOs without compromising construction and functionality. Lightweight and low-profile, the Delta LSOs and TLSOs put little strain on the wearer, while a revolutionary pulley compression system delivers a 4:1 return on the user's pulling power. Universal sizing accommodates waist sizes from 25" to 68", and varying styles give options such as various back panel height and shape, as well as optional lateral compression panels.



PRODUCTS

Delta 27

Sugg HCPC: L0627/L0642

Delta 31

Sugg HCPC: L0631/L0648

Delta 37

Sugg HCPC: L0637/L0650

Delta 39

Sugg HCPC: L0639/L0651

Delta 59

Sugg HCPC: L0637/L0650

Delta 7X

Sugg HCPC: L0627/L0642

Delta 8X

Sugg HCPC: L0631/L0648

Delta 9X

Sugg HCPC: L0637/L0650

Delta 1031X

Sugg HCPC: L0631/L0648

Delta 10X

Sugg HCPC: L0637/L0650

Delta 26

Sugg HCPC: L0626/L0641

Delta 33

Sugg HCPC: L0633/L0649

Delta 12X

Sugg HCPC L0456/L0457

Delta 455X

Sugg HCPC: L0454/L0455

Delta 18X

Sugg HCPC: L0450

Delta TLSO with ATE

Sugg HCPC L0462

Delta 27

Sugg HCPC :L0627/ L0642



- Features:
- Breathable mesh construction
 - 4:1 compression ratio
 - Heat moldable posterior panel

Part #	Size
DL-27	Small- 4XL (25"-68" waist)

Accessories

Part #	Description
DL-EXT	8" Extender panel

Delta 31

Sugg HCPC: L0631/ L0648



- Features:
- Breathable mesh construction
 - 4:1 compression ratio
 - Heat moldable posterior panel

Part #	Size
DL-31	Small- 4XL (25"-68" waist)

Accessories

Part #	Description
DL-EXT	8" Extender panel

Delta 37

Sugg HCPC: L0637/ L0650



- Features:
- 4:1 compression ratio
 - Heat moldable posterior panel
 - Removable lateral panels

Part #	Size
DL-37	Small- 4XL (25"-68" waist)

Accessories

Part #	Description
DL-EXT	8" Extender panel

Delta 39 Sugg HCPC :L0639/ L0651



Features:

Rigid anterior-posterior and medial-lateral control with abdominal compression
Dual pulley system with soft thumb pulls allows targeting of specific areas
Durable and breathable construction

Accessories

Part #	Size
DL-39	Universal size

Part #	Description
DL-EXT	8" Extender panel

Delta 59 Sugg HCPC: L0637/ L0650



Features:

Breathable mesh construction
Removable 15" posterior panel
Removable lateral panels

Accessories

Part #	Size
DL-59	Small- 4XL (25"-68" waist)

Part #	Description
DL-EXT	8" Extender panel

Delta 7X Sugg HCPC: L0627/ L0642



Features:

Lightweight construction
4:1 compression ratio
Heat moldable posterior panel

Accessories

Part #	Size
DL-7X	Small- 4XL (25"-68" waist)

Part #	Description
DL-EXT	8" Extender panel

Delta 8X

Sugg HCPC: L0631/ L0648



- Features:
- Lightweight construction
 - 4:1 Compression ratio
 - Heat moldable posterior panel

Part #	Size
DL-8X	Small- 4XL (25"-68" waist)

Accessories

Part #:	Description
DL-EXT	8" Extender panel

Delta 9X

Sugg HCPC: L0637/ L0650



- Features:
- 4:1 compression ratio
 - Heat moldable posterior panel
 - Removable lateral panels

Part #	Size
DL-9X	Small- 4XL (25"-68" waist)

Accessories

Part #	Description
DL-EXT	8" Extender panel

Delta 1031X

Sugg HCPC: L0631/ L0648



- Features:
- 4:1 Compression ratio
 - Removable 15" posterior panel
 - Lightweight, durable construction

Part #	Size
DL-1031X	Small- 4XL (25"-68" waist)

Accessories

Part #	Description
DL-EXT	8" Extender panel

Delta 10X Sugg HCPC: L0637/ L0650



Features:

- 4: 1 compression ratio
- Removable 15" posterior panel
- Removable lateral panels

Part #	Size
DL-10X	Small- 4XL (25"-68" waist)

Accessories

Part #:	Description
DL-EXT	8" Extender panel

Delta 26 Sugg HCPC: L0626/L0641



Features:

- Breathable mesh construction
- Pulley system to maximize compression
- Easy to use pull tabs

Indications:

- spinal instability
- spinal stenosis
- chronic back pain

Part #	Size
DL- 26	Universal

Delta 33 Sugg HCPC: L0633/L0649



Features:

- Rigid anterior and lateral support
- Medial lateral control
- Easy to use pull tabs

Indications:

- Acute sprains and strains
- Spinal stenosis
- Bulging/herniated discs
- Facet syndrome
- Spondylosis
- Post-op stabilization

Part #	Size
DL- 33	Universal

Delta 12X Sugg HCPC: L0456/ L0457



Features:

- 4:1 compression ratio
- Adjustable thoracic support
- Lightweight and durable construction

Indications:

- Sprains and strains of the thoracic region
- Displacement of intervertebral discs
- Fracture of the vertebral column

Part #	Size
DL-12X	Small- 4XL (25"-68" waist)

Accessories

Part #	Description
DL-EXT	8" Extender panel

Delta 455X

Sugg HCPC: L0454/L0455



Features:

- Adjustable anterior bar
- Adjustable thoracic support
- Light weight and durable construction

Indications:

- Sprains and strains of the thoracic region
- Back pain
- Prophylactic use

Part #	Size
DL-455X	Universal

Delta 18X

Sugg HCPC: L0450



Features:

- High-quality soft goods giving optimum compression
- Light weight and comfortable
- Adjustable and universal support

Indications:

- Sprains and strains of the cervical and/or thoracic region
- Prophylactic use to prevent injury
- Support for weak muscles
- Spinal stenosis of thoracic region

Part #	Size
DL-18X	Universal

Delta TLSO with ATE

Sugg HCPC: L0462



Features:

- Adjustable anterior bar
- Adjustable thoracic

Indications:

- Sprains and strains of the thoracic region
- Displacement of intervertebral discs
- Fracture of the vertebral column

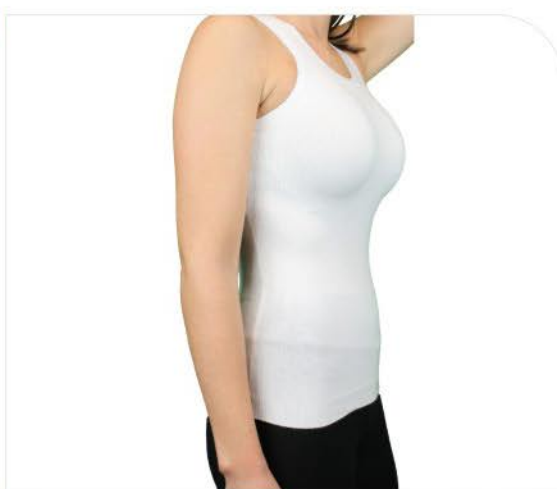
Accessories

Part #	Size
DL-599X	Small- 4XL (25"-68" waist)

Part #	Description
DL-EXT	8" Extender panel

SIZED LSOs AND MISCELLANEOUS SPINAL

Comfortland also offers sized LSO options designed for patients with spinal instability, spinal stenosis, or chronic back pain. Our sized LSOs come in a variety of styles and features including pneumatic and compartmentalized versions. In addition, Comfortland offers various other spinal items and accessories such as hot/cold packs and body interface shirts to help with patient comfort and compliance.



Delta 627

Sugg HCPC: L0627/ L0642



Features:

- Low profile belt design
- 4:1 compression ratio
- Heat moldable posterior panel

Part #	Size	DL-627-5	X-Large (44"-50" waist)
DL-627-2	Small (25"-32" waist)	DL-627-6	XX-Large (50"-56" waist)
DL-627-3	Medium(32"-38" waist)	DL-627-7	XXX-Large (56"-62" waist)
DL-627-4	Large (38"-44" waist)	DL-627-8	XXXX-Large (62"-68" waist)

Delta 631

Sugg HCPC: L0631/ L0648



Features:

- Low profile belt design
- 4:1 compression ratio
- Heat moldable posterior panel

Part #	Size	DL-631-5	X-Large (44"-50" waist)
DL-631-2	Small (25"-32" waist)	DL-631-6	XX-Large (50"-56" waist)
DL-631-3	Medium(32"-38" waist)	DL-631-7	XXX-Large (56"-62" waist)
DL-631-4	Large (38"-44" waist)	DL-631-8	XXXX-Large (62"-68" waist)

Delta 637

Sugg HCPC: L0637/ L0650



Features:

- 4:1 compression ratio
- Heat moldable posterior panel
- Removable lateral panels

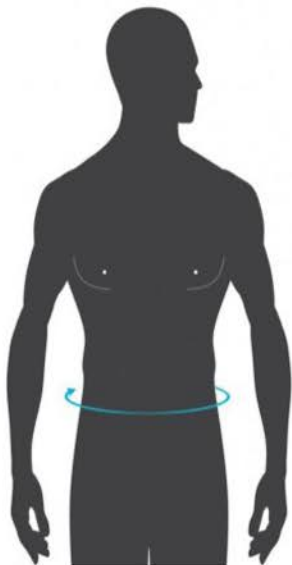
Part #	Size	DL-637-5	X-Large (44"-50" waist)
DL-637-2	Small (25"-32" waist)	DL-637-6	XX-Large (50"-56" waist)
DL-637-3	Medium(32"-38" waist)	DL-637-7	XXX-Large (56"-62" waist)
DL-637-4	Large (38"-44" waist)	DL-637-8	XXXX-Large (62"-68" waist)



Features:

- 4:1 compression ratio
- Removable 15'' posterior panel
- Lightweight and durable construction

Part #	Size	DS-639-5	X-Large (44"-50" waist)
DS-639-2	Small (25"-32" waist)	DS-639-6	XX-Large (50"-56" waist)
DS-639-3	Medium(32"-38" waist)	DS-639-7	XXX-Large (56"-62" waist)
DS-639-4	Large (38"-44" waist)	DS-639-8	XXXX-Large (62"-68" waist)



Waist Measurement

Measure the circumference around your waist at the narrowest part of your torso in inches.

Hot/Cold Therapy Pack



Indications:

Compatible with all Comfortland LSOs
Effective in pain relief

Features:

Sectional gel areas for even distribution
Microwaveable and freezable
Includes velcro for easy attachment

Part #	Size
HC-100	One Size Fits All

Sacro Stabilizer (SI-23)

Sugg HCPC: L0623



Indications:

SI joint instabilities
SI joint arthritis
SI joint syndrome
SI joint pain

Features:

Customizable universal design fits most
Easy to use hook and loop fastening
Soft, breathable construction
Rigid anterior and posterior panels provide support and relief to abdomen and sacroiliac joints

Part #	Size
SI-23	One Size Fits All

Comfortland SI-100

Sugg HCPC: L0621



Indications:

Piriformis syndrome
Hip, pelvic, and upper leg pain
Lower back pain

Features:

Low-profile design
Designed to be worn for extended periods without causing muscle atrophy

Part #	Size	SI-100-4	Large(40"-44" waist)
SI-100-2	Small(32"-36" waist)	SI-100-5	X-Large(44"-48" waist)
SI-100-3	Medium(36"-40" waist)	SI-100-6	XX-Large(48"-52" waist)



Indication:

LSO migrates or shifts
Extra compression required with LSO
Breathable interface needed for LSO

Features:

Seamless and wrinkle free construction helps provide skin protection and comfort for spinal orthosis wearers
Coolmax and X-Static fibers help keep skin dry by wicking moisture
Can be used for casting
Stretches in all directions

Part #	Size	CK-009-4	Large
CK-009-3	Medium	CK-009-5	Extra Large

AVALON ELASTIC LSOs

Designed for patients with **spinal instability, spinal stenosis, or chronic back pain**. The Avalon elastic LSOs are a perfect economic solution to high end back supports. Comprised of durable elastics, the Avalon series feature a more classic design and come in multiple models, each with varying levels of support. Avalon LSOs are light, long-lasting, and fit into nearly any budget.



Avalon LSO

Sugg HCPC: L0630/ L0643



Features:

- Low profile belt design
- Lightweight and breathable construction
- Removable 14" posterior panel

Part #	Size
CK-889-1	X-Small (26"-32" waist)
CK-889-2	Small (32"-36" waist)
CK-889-3	Medium (36"-40" waist)
CK-889-4	Large (40"-44" waist)
CK-889-5	X-Large (44"-48" waist)
CK-889-6	XX-Large (48"-52" waist)
CK-889-7	XXX-Large (52"-58" waist)
CK-889-8	XXXX-Large (58"-64" waist)

Avalon Deluxe LSO

Sugg HCPC: L0631/ L0648



Features:

- Low profile belt design
- Lightweight construction
- Removable 14" posterior panel

Part #	Size
CK-888-1	X-Small (26"-32" waist)
CK-888-2	Small (32"-36" waist)
CK-888-3	Medium (36"-40" waist)
CK-888-4	Large (40"-44" waist)
CK-888-5	X-Large (44"-48" waist)
CK-888-6	XX-Large (48"-52" waist)
CK-888-7	XXX-Large (52"-58" waist)
CK-888-8	XXXX-Large (58"-64" waist)

Avalon LP

Sugg HCPC: L0627/ L0642



Features:

- Low profile belt design
- Lightweight and breathable construction
- Removable 10" posterior panel

Part #	Size
CK-588-1	X-Small (26"-32" waist)
CK-588-2	Small (32"-36" waist)
CK-588-3	Medium (36"-40" waist)
CK-588-4	Large (40"-44" waist)
CK-588-5	X-Large (44"-48" waist)
CK-588-6	XX-Large (48"-52" waist)
CK-588-7	XXX-Large (52"-58" waist)
CK-588-8	XXXX-Large (58"-64" waist)

Avalon Premium LSO

Sugg HCPC: L0650



Features:

- Low profile belt design
- Lightweight construction
- Removable 14" posterior panel

Part #	Size
CK-999-1	X-Small (26"-32" waist)
CK-999-2	Small (32"-36" waist)
CK-999-3	Medium (36"-40" waist)
CK-999-4	Large (40"-44" waist)
CK-999-5	X-Large (44"-48" waist)
CK-999-6	XX-Large (48"-52" waist)
CK-999-7	XXX-Large (52"-58" waist)
CK-999-8	XXXX-Large (58"-64" waist)

CERVICAL BRACING AND TRACTION

Designed for patients with **whiplash, herniated discs, mild neck injuries, or for those who need post-operative support**, Comfortland features a wide variety of cervical bracing and traction units to fit almost every situation. From cost effective foam collars to sturdy, reinforced immobilization collars, it is our goal to have a device for each level of rehabilitation.



PRODUCTS

Comfortland Foam Cervical Collar

Sugg HCPC: L0120

Wellcare Cervical Collar

Sugg HCPC: L0172

Comfortland Universal Cervical Collar

Sugg HCPC: L0174

Comfortmax Elite Cervical Orthosis

Sugg HCPC: L0180

Pneumatic Cervical Traction Unit

Sugg HCPC: E0849

Comfortland Cervical Traction Unit

Sugg HCPC: E0855

Comfortland Foam Cervical Collar

Sugg HCPC: L0120



Features:

Medical-grade foam

Ribbed stockinette promotes ventilation

Easy to apply and adjust

Part #	Size
CV-202-2	2"collar(One Size Fits All)
CV-202-3	3"collar(One Size Fits All)
CV-202-4	4"collar(One Size Fits All)

Wellcare Cervical Collar

Sugg HCPC: L0172



Features:

Low-profile design

Easy to apply and adjust

Large trachea opening for easy access

Part #	Size
CV-600-2	Small- (10"-13" neck)
CV-600-3	Medium(13"-16" neck)
CV-600-4	Large (16"-19" neck)
CV-600-5	X-Large(19"-23" neck)

Comfortland Universal Cervical Collar

Sugg HCPC: L0174



Features:

Universal sizing design

Easy to apply and adjust

Large trachea opening for easy access

Part #	Size
CV-200	One Size Fits All

Comfortmax Elite Cervical Orthosis

Sugg HCPC: L0180



Features:

Lightweight design

Adjustable anterior support

MRI compatible

Part #	Size
CV-500X	15"-20" (Mid-neck circ.)

Pneumatic Cervical Traction Unit

Sugg HCPC: E0849



Features:

Traction provided by pneumatic force
Easy to use hand pump and pressure gauge
Traction applied in most effective supine position

Indications:

Herniated or compressed discs
Radiculopathy
Osteoarthritis
Pain and headaches due to soft tissue stiffness

Part #	Size
CV-900	Universal

Comfortland Cervical Traction Unit

Sugg HCPC: E0855



Features:

One size fits all
Direct traction force provided by cable system
Easy to use knob adjusts force
Traction applied in most effective supine position

Indications:

Herniated or compressed discs
Radiculopathy
Osteoarthritis
Pain and headaches due to soft tissue stiffness

Part #	Size
CV-1000	Universal

HIP BRACING

Comfortland's hip bracing has been designed to provide stability and support for mild to moderate osteoarthritis of the hip and anterior/posterior hip dysplasia. They are also indicated for hip revisions and surgeries in both a post-op and pre-op capacity. Made of durable and lightweight materials, universally sized and easily adjustable, Comfortland hip braces are the best option for patient and practitioner both.



Comfortland Post-Op ROM Hip

Sugg HCPC: L1686



Indications:

- Arthroplasty
- Hip dysplasia-anterior or posterior
- Hip revisions and surgeries
- Post-Op and Pre-Op

Features:

- Universal size
- Ambidextrous, fits left or right leg/hip
- Provides multiple abduction, adduction, flexion, and extension settings
- Lightweight and breathable pads and materials

Part # CK-686

Comfortland Comfort Abduction Control Joint

Sugg HCPC: L2624



Indications:

See CK-686.

Features:

- Ball-joint mechanism
- Universal/bilateral, works for left or right leg
- Hip abduction and adduction easily adjusted with included Allen wrench

Part # CK-687

Comfortmax Hip Orthosis

Sugg HCPC: L1690



Indications:

- Mild to moderate hip Osteoarthritis
- Anterior or posterior hip dysplasia
- Hip revisions and surgeries
- Post-op and pre-op

Features:

- Universal and bilateral hip support
- Hip abduction and adduction easily adjusted with included Allen wrench
- Flexion/extension ROM joint
- Lightweight and breathable material

Part # CK-690

OSTEOARTHRITIS KNEE BRACING

Designed for patients with **osteoarthritis, rheumatoid arthritis, or meniscal cartilage derangement**, Comfortland offers a full line of osteoarthritis knee braces, each with unique designs and features. Every Comfortland OA knee brace has been designed and tested by industry professionals, with the sole purpose to isolate and unload pressure on specific compartments of the knee, helping patients achieve a pain-free range of motion.



PRODUCTS

Comfortland OA Knee Brace

Sugg HCPC: L1843/ L1851

Comfortland Deluxe OA

Sugg HCPC: L1845/ L1852

Endeavor OA LP

Sugg HCPC: L1851

Comfortland OA Knee Brace Sugg HCPC: L1843/ L1851



Features:

Universal sizing design
3-point leverage system
Adjustable ROM hinge

Part #	Size
OA-200-L	Left Knee- One Size Fits All
OA-200-R	Right Knee- One Size Fits All

Comfortland Deluxe OA Sugg HCPC: L1845/ L1852



Features:

Lightweight and durable construction
Malleable uprights
Push-button valgus/varus adjustment

Part #	Size	CK-250-4-L	Large Left (21"-23.5" thigh)
CK-250-2-L	Small Left (15.5"-18.5" thigh)	CK-250-4-R	Large Right (21"-23.5" thigh)
CK-250-2-R	Small Right (15.5"-18.5" thigh)	CK-250-5-L	X-Large Left (23.5"-26.5" thigh)
CK-250-3-L	Medium Left (18.5"-21" thigh)	CK-250-5-R	X-Large Right (23.5"-26.5" thigh)
CK-250-3-R	Medium Right (18.5"-21" thigh)	CK-250-6-L	XX-Large Left (26.5"-29" thigh)
		CK-250-6-R	XX-Large Right (26.5"-29" thigh)

Endeavor OA LP Sugg HCPC: L1851



Features:

Pull-up design for easy application
Mesh backing for optimum ventilation
3-point leverage system

Part #	Size	ER-300-4-L	Large Left (21"-23.5" thigh)
ER-300-2-L	Small Left (15.5"-18.5" thigh)	ER-300-4-R	Large Right (21"-23.5" thigh)
ER-300-2-R	Small Right (15.5"-18.5" thigh)	ER-300-5-L	X-Large Left (23.5"-26.5" thigh)
ER-300-3-L	Medium Left (18.5"-21" thigh)	ER-300-5-R	X-Large Right (23.5"-26.5" thigh)
ER-300-3-R	Medium Right (18.5"-21" thigh)	ER-300-6-L	XX-Large Left (26.5"-29" thigh)
		ER-300-6-R	XX-Large Right (26.5"-29" thigh)

LIGAMENT BRACING

Comfortland's ligament braces have been designed to provide stability and support following injuries or reconstruction to the ACL, PCL, MCL, and LCL. They are also indicated for sprains/strains of the knee, as well as loose bodies in the knee. Each brace features lightweight, sturdy construction, and offer options for nearly any situation. The Comfortland ACL line gives patients the feel of a custom brace without the custom price.

Comfortland ACL Hinged Knee Brace Sugg HCPC: L1845/L1852



Features:

Lightweight, durable construction

Malleable uprights

Drop-lock ROM hinge

Part #	Size	CK-207-4-L	Large Left (21"-23.5" thigh)
CK-207-2-L	Small Left (15.5"-18.5" thigh)	CK-207-4-R	Large Right (21"-23.5" thigh)
CK-207-2-R	Small Right (15.5"-18.5" thigh)	CK-207-5-L	X-Large Left (23.5"-26.5" thigh)
CK-207-3-L	Medium Left (18.5"-21" thigh)	CK-207-5-R	X-Large Right (23.5"-26.5" thigh)
CK-207-3-R	Medium Right (18.5"-21" thigh)	CK-207-6-L	XX-Large Left (26.5"-29" thigh)
		CK-207-6-R	XX-Large Right (26.5"-29" thigh)

Endeavor Deluxe ACL Knee Brace Sugg HCPC: L1845/L1852



Features:

Lightweight, durable construction

Malleable uprights

Durable soft good liner

Part #	Size	ER-208-4-L	Large Left (21"-23.5" thigh)
ER-208-2-L	Small Left (15.5"-18.5" thigh)	ER-208-4-R	Large Right (21"-23.5" thigh)
ER-208-2-R	Small Right (15.5"-18.5" thigh)	ER-208-5-L	X-Large Left (23.5"-26.5" thigh)
ER-208-3-L	Medium Left (18.5"-21" thigh)	ER-208-5-R	X-Large Right (23.5"-26.5" thigh)
ER-208-3-R	Medium Right (18.5"-21" thigh)	ER-208-6-L	XX-Large Left (26.5"-29" thigh)
		ER-208-6-R	XX-Large Right (26.5"-29" thigh)

HINGED KNEE BRACES AND KNEE IMMOBILIZER

Comfortland's hinged knee braces are a great economic solution to **general knee pain, sprains and strains, chronic knee instability, as well as mild injuries to the collateral ligaments.** Our hinged knee braces are available in both universal and sized styles, giving patients the option to choose a brace that works for their specific situation.



PRODUCTS

Comfortland Hinged Knee Brace 12''

Sugg HCPC: L1832/ L1833

Comfortland Universal Hinged Knee Brace

Sugg HCPC: L1832/ L1833

Comfortland Hinged Knee Brace (Covered Hinge)

Sugg HCPC: L1832/L1833

Comfortland Hinged Knee Brace 16''

Sugg HCPC: L1832/L1833

Post-op Transition Knee Brace

Sugg HCPC: L1832/L1833

Comfortland Hinged Wraparound Knee Support

Sugg HCPC: L1820

Universal Hinged Wraparound Knee brace

Sugg HCPC: L1820

Comfortland Neoprene Hinged Knee Support

Sugg HCPC: L1810/L1812

Comfortmax Neoprene Hinged Knee

Sugg HCPC: L1810/L1812

Comfortland Suspension Sleeve

Sugg HCPC: L2397

Universal Tri-panel Knee Immobilizer

Sugg HCPC: L1830

Comfortland Condylar Pad

Sugg HCPC: L2810

Comfortmax Patella Strap

Comfortland Hinged Knee Brace 12'' Sugg HCPC: L1832/ L1833



Features:

Front closure for easy application

Sturdy lateral supports

Adjustable ROM hinge

Part #	Size		
CK-111-2	Small (Less than 18" thigh)	CK-111-6	XX-Large (27"-30" thigh)
CK-111-3	Medium (18"-21" thigh)	CK-111-7	XXX-Large (30"-35" thigh)
CK-111-4	Large (21"-24" thigh)	CK-111-8	XXXX-Large (35"-40" thigh)
CK-111-5	X-Large (24"-27" thigh)	CK-111-9	XXXXX-Large (40"-46" thigh)

Comfortland Universal Hinged Knee Brace Sugg HCPC: L1832/ L1833



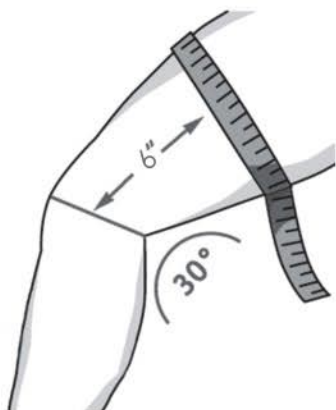
Features:

Front closure for easy application

Sturdy lateral supports

Covered, adjustable ROM hinge

Part #	Size
CK-110	One size fits all
CK-110X	Maximum Size



Thigh Measurement

Measure the circumference around your leg,

6 inches above the middle of your kneecap

Comfortland Hinged Knee Brace (Covered Hinge) Sugg HCPC: L1832/L1833



Features:

- Front closure for easy application
- Sturdy lateral supports
- Adjustable ROM hinge

Part #	Size		
CK-101-2	Small (Less than 18" thigh)	CK-101-6	XX-Large (27"-30" thigh)
CK-101-3	Medium (18"-21" thigh)	CK-101-7	XXX-Large (30"-35" thigh)
CK-101-4	Large (21"-24" thigh)	CK-101-8	XXXX-Large (35"-40" thigh)
CK-101-5	X-Large (24"-27" thigh)	CK-101-9	XXXXX-Large (40"-46" thigh)

Comfortland Hinged Knee Brace (16")

Sugg HCPC: L1832/ L1833



Features:

- Front closure for easy application
- Sturdy lateral supports
- Adjustable ROM hinge

Part #	Size		
CK-103-2	Small (Less than 18" thigh)		
CK-103-3	Medium (18"-21" thigh)		
CK-103-4	Large (21"-24" thigh)	CK-103-6	XX-Large (27"-30" thigh)
CK-103-5	X-Large (24"-27" thigh)	CK-103-7	XXX-Large (30"-35" thigh)

Post-op Transition Knee Brace Sugg HCPC: L1832/ L1833



Indications:

- Post-operative knee immobilization
- Tears of cartilage or meniscus of knee
- Injuries of the collateral ligaments

Features:

- Telescoping frame
- Quick release buckles for easy application
- Adjustable ROM hinge

Part #	Size
CK-205	One Size Fits All

Comfortland Hinged Wraparound Knee Support

Sugg HCPC: L1820



Features:

- Front closure for easy application
- Sturdy lateral supports
- 4-way stretch for patient comfort

Part #	Size
CK-108-2	Small (15"-18.5" thigh)
CK-108-3	Medium(18.5"-21" thigh)
CK-108-4	Large (21"-23.5" thigh)
CK-108-5	X-Large (23.5"-26.5" thigh)
CK-108-6	XX-Large (26.5"-29" thigh)
CK-108-7	XXX-Large (30"-35" thigh)

Universal Hinged Wraparound Knee brace

Sugg HCPC: L1820



Features:

- Front closure for easy application
- Sturdy lateral supports
- 4-way stretch nylon for patient comfort

Part #	Size
CK-120	One size fits all

Comfortland Neoprene Hinged Knee Support

Sugg HCPC: L1810/1812



Indications:

- Sprains and strains of the knee
- Mild or moderate ligament pain
- Osgood Schlatter disease

Features:

- Easy pull-up design
- Sturdy lateral supports
- 4-way stretch nylon for patient comfort

Part #	Size
CK-105-2	Small (15"-18" thigh)
CK-105-3	Medium (18.5"-21" thigh)
CK-105-4	Large (21"-23.5" thigh)
CK-105-5	X-Large (23.5"-26.5" thigh)
CK-105-6	XX-Large (26.5"-29" thigh)
CK-105-7	XXX-Large (30"-35" thigh)

Comfortmax Neoprene Hinged Knee

Sugg HCPC: L1810/L1812



Indications:

- Sprains and strains of the knee
- Mild or moderate ligament pain
- Osgood Schlatter disease
- Prophylactic use

Features:

- Ambidextrous design fits left or right knee
- Easy pull-on design
- Lateral supports
- Lightweight and breathable material

Part #	Size
CK-109-2	Small (15"-18.5" thigh)
CK-109-3	Medium(18.5"-21" thigh)
CK-109-4	Large (21"-23.5" thigh)
CK-109-5	X-Large (23.5"-26.5" thigh)
CK-109-6	XX-Large (26.5"-29" thigh)

Comfortland Suspension Sleeve

Sugg HCPC: L2397



Indications:

Brace migration
Skin irritation
Adding soft tissue compression

Features:

Cotton/ lycra construction with neoprene lining
Billable with all ROM knee braces
(L1832, L1833, L1851, L1845, L1852, L1843)

Part #	Size
CK-007	One size fits all

Universal Tri-panel Knee Immobilizer

Sugg HCPC: L1830



Indications:

ACL, MCL, PCL, and LCL injuries
Soft tissue injuries
Post-operative knee immobilization

Features:

Unique design fits most thigh and calf sizes
Sturdy construction provides full knee immobilization

Part #	Size
CK-150	14" immobilizer (One size fits all)
CK-151	16" immobilizer (One size fits all)
CK-153	18" immobilizer (One size fits all)
CK-155	20" immobilizer (One size fits all)
CK-157	24" immobilizer (One size fits all)

Comfortland Condylar Pad

Sugg HCPC: L2810



Indications:

Knee pain due to arthritis
Post-op surgery
Chronic knee pain

Features:

Mesh/nylon construction
Velcro attachment
Unique air bladder for comfort
One size fits all

Part #	Size
CK-008	Universal

Comfortmax Patella Strap



Features:

Latex free
Lightweight, minimal design
Easy to adjust hook and loop closure

The 67-500 Comfortmax Patella Strap was designed to provide compression and support for Patellar tendon injuries and conditions including Runner's Knee, patellar subluxation, tendinitis, tendinopathy, and Osgood-Schlatter's disease. Features: latex free, lightweight minimal design; easy to adjust hook and loop closure.

Part #	Size
67-500-2	(Small 9"-13")
67-500-3	(Medium 13"-16")
67-500-4	(Large 16"-19")

WALKERS AND NIGHT SPLINTS

Designed by podiatrists, Comfortland walkers and night splints give patients and practitioners all of the options needed for optimum healing of the foot and ankle area, as well as the treatment of plantar fasciitis. Special care was taken to ensure that Comfortland walkers absorb maximum impact during movement while promoting a normal gait, and that night splints give the ability to apply just the right amount of dorsi-flexion, helping to break the nighttime/morning pain cycle.



PRODUCTS

Premium High Top Air Walker

Sugg HCPC: L4360/ L4361

Premium Low Top Air Walker

Sugg HCPC: L4360/ L4361

Premium High Top Cam Walker

Sugg HCPC: L4386/L4387

Premium Low Top Cam Walker

Sugg HCPC: L4386/L4387

Comfort Dorsal Night Splint

Sugg HCPC: L4396/ L4397

Posterior Night Splint

Sugg HCPC: L4396/ L4397

Padded Night Splint

Sugg HCPC: L4396/ L4397

Premium High Top Air Walker

Sugg HCPC: L4360/ L4361



Indications:

Soft tissue injuries
Grade II and III sprains
Stable fractures

Features:

Inflatable air bladder
Shock absorbing insole
Fits left or right foot

Part #	Size
CK-323-2	Small (M 5-7, W 6-8)
CK-323-3	Medium (M 8-11, W 9-12)
CK-323-4	Large (M 11-12.5, W 12-13.5)
CK-323-5	X-Large (M 13+, W 14+)

Premium Low Top Air Walker

Sugg HCPC: L4360/ L4361



Indications:

Soft tissue injuries
Grade II and III sprains
Stable fractures

Features:

Inflatable air bladder
Shock absorbing insole
Fits left or right foot

Part #	Size
61-324-2	Small (M 5-7, W 6-8)
61-324-3	Medium (M 8-11, W 9-12)
61-324-4	Large (M 11-12.5, W 12-13.5)
61-324-5	X-Large (M 13+, W 14+)

Premium High Top Cam Walker

Sugg HCPC: L4386/ L4387



Indications:

Soft tissue injuries
Grade II and III sprains
Stable fractures

Features:

Rocker bottom promotes normal gait
Shock absorbing insole
Fits left or right foot

Part #	Size
CK-321-2	Small (M 5-7, W 6-8)
CK-321-3	Medium (M 8-11, W 9-12)
CK-321-4	Large (M 11-12.5, W 12-13.5)
CK-321-5	X-Large (M 13+, W 14+)

Premium Low Top Cam Walker

Sugg HCPC: L4386/ L4387



Indications:

Soft tissue injuries
Grade II and III sprains
Stable fractures

Features:

Rocker bottom promotes normal gait
Shock absorbing insole
Fits left or right foot

Part #:	Size:
61-322-2	Small (M 5-7, W 6-8)
61-322-3	Medium (M 8-11, W 9-12)
61-322-4	Large (M 11-12.5, W 12-13.5)
61-322-5	X-Large (M 13+, W 14+)

Comfort Dorsal Night Splint Sugg HCPC: L4396/ L4397



Indications:

Plantar fasciitis
Achilles tendonitis
General heel pain

Features:

Adjustable dorsi-flexion strap
Air bladder for patient comfort

Part #	Size
CK-304-3	Medium (M up to 9, W up to 10)
CK-304-4	Large (M 9.5+, W 10.5+)

Posterior Night Splint Sugg HCPC: L4396/ L4397



Indications:

Plantar fasciitis
Achilles tendonitis
General heel pain

Features:

Adjustable dorsi-flexion strap
Soft foam lining for patient comfort
Fits left or right foot

Part #	Size
63-103-2	Small (M up to 7, W up to 7.5)
63-103-3	Medium (M 7.5- 10, W 8- 10.5)
63-103-4	Large (M 10.5+, W 11+)

Padded Night Splint Sugg HCPC: L4396/L4397



Indications:

Plantar fasciitis
Achilles tendonitis
General heel pain

Features:

More padding than traditional splints
Removable dorsi-flexion wedge
Fits left or right foot

Part #	Size
63-105-2	Small (M up to 7, W up to 7.5)
63-105-3	Medium (M 7.5- 10, W 8- 10.5)
63-105-4	Large (M 10.5+, W 11+)

ANKLE BRACING

Comfortland's ankle bracing line was developed with the various needs of the practitioner in mind. With styles and options for nearly every application, Comfortland ankle braces offer something for every situation, and guarantee professional grade comfort and support.

ACCORD ANKLE BRACE III Sugg HCPC: L1971/ L1906



*without panel



*with panel

Indications:

Acute and chronic ankle sprains
Ankle instability
Syndesmosis sprains

Features:

Front closure for easy application
Rigid uprights and functional hinge
Removable posterior support panel

Part #	Size
CL-301-2-L	Small Left (M up to 8, W up to 9)
CL-301-2-R	Small Right (M up to 8, W up to 9)
CL-301-3-L	Medium Left (M 8.5- 12, W 9.5- 13)
CL-301-3-R	Medium Right (M 8.5- 12, W 9.5- 13)
CL-301-4-L	Large Left (M 12+, W 13.5+)
CL-301-4-R	Large Right (M 12+, W 13.5+)

Accessories

Part #	Description
CL-301-P	Posterior support panel
CL-301-E-L	Calf cuff extender (Left)
CL-301-E-R	Calf cuff extender (Right)

SAGA ANKLE BRACE

Sugg HCPC: L1971



Indications:

Tibialis tendonitis
Ankle instability, sprains
and strains
Osteoarthritis
Ankle Fracture
Non-traumatic ruptures
of tendon

Features:

Ambidextrous design fits left
or right foot
Adjustable Velcro closures
Calf and lateral supports
Full flexion hinge
Lightweight and easy to adjust
Moldable foot plate

Part #	Size
65-971-3	SMALL/MEDIUM (M up to 10, W up to 11)
65-971-4	LARGE/EXTRA LARGE (M 10.5 +, W 11+)

LEGEND ANKLE BRACE

Sugg HCPC: L1906



Indications:

Ankle instability
Acute ankle strains or sprains
Tendinopathy of foot or ankle
Prophylactic use

Features:

Ambidextrous design fits left or right foot
Adjustable velcro closures
Full flexion hinge
Moldable foot plate
Lightweight and easy to adjust

Part #	Size
65-100-3	Small/Medium (M up to 9.5, W up to 10)
65-100-4	Large/X-Large (M 10+, W 11+)

Comfortmax AFO

Sugg HCPC: L1951



Indications:

Peroneal paralysis

Acquired deformity of the foot and ankle

Post-operative Achilles treatment

Features:

Lightweight carbon fiber construction

Footplate provides high energy return

Handles weight up to 285lbs

Part #	Size
CK-289-2-L	Small Left (M 4.5- 7, W 6- 8.5)
CK-289-2-R	Small Right (M 4.5- 7, W 6- 8.5)
CK-289-3-L	Medium Left (M 7- 8.5, W 8.5- 10)
CK-289-3-R	Medium Right (M 7- 8.5, W 8.5- 10)
CK-289-4-L	Large Left (M 8.5- 11.5, W 10- 13)
CK-289-4-R	Large Right (M 8.5- 11.5, W 10- 13)
CK-289-5-L	X-Large Left (M 11.5- 14, W 13- 15.5)
CK-289-5-R	X-Large Right (M 11.5- 14, W 13- 15.5)

Foot Drop Splint

Sugg HCPC: L1930



Indications:

Peroneal paralysis

Acquired deformity of the foot and ankle

Post-operative Achilles treatment

Features:

Injection molded polypropylene

Varying thickness for added strength

Trimable footplate

Part #	Size
CK-335-3-L	Medium Left (10.5" splint height)
CK-335-3-R	Medium Right (10.5" splint height)
CK-335-4-L	Large Left (11.5" splint height)
CK-335-4-R	Large Right (11.5" splint height)

Tour Ankle Brace

Sugg HCPC: L1902



Indications:

Chronic ankle instability
Sprains and strains of the ankle
Prophylactic use

Features:

Lightweight breathable construction
Figure 8 design mimics ankle taping
Elastic cuff closure for added stability

Part #	Size	CK-302-3	Medium (12"- 13" ankle)
CK-302-1	X-Small (up to 11" ankle)	CK-302-4	Large (13"- 14" ankle)
CK-302-2	Small (11"- 12" ankle)	CK-302-5	X-Large (14"+ ankle)

Tour Quick-Lace

Sugg HCPC: L1902



Indications:

Chronic ankle instability
Sprains and strains of the ankle
Prophylactic use

Features:

Lightweight breathable construction
Figure 8 design mimics ankle taping
Quick-lace design for easy application

Part #	Size	CK-303-3	Medium (12"- 13" ankle)
CK-303-1	X-Small (up to 11" ankle)	CK-303-4	Large (13"- 14" ankle)
CK-303-2	Small (11"- 12" ankle)	CK-303-5	X-Large (14"+ ankle)

Motion Ankle Brace

Sugg HCPC: L1902



Indications:

Chronic ankle instability
Sprains and strains of the ankle
Prophylactic use

Features:

Wide elastic cuff closure
Medial and lateral stays for added support
Fits left or right foot

Part #	Size	65-102-4	Large (M 10.5- 12, W 11.5- 13)
65-102-2	Small (M 5- 7, W 6- 9)	65-102-5	X-Large (M 12+, W 13.5 +)
65-102-3	Medium (M 7.5- 10, W 9.5- 11)		

Airarch Ankle Brace Sugg HCPC: L1902



Indications:

Plantar fasciitis
Achilles tendonitis
General heel pain

Features:

Interconnected cells transfer air between arch and heel during movement
Pulsating compression reduces swelling and enhances circulation

Part #	Size
CK-318-2	Small (M 5.5- 7, W 5.5- 8.5)
CK-318-3	Medium (M 7.5- 11, W 9- 12)
CK-318-4	Large (M 11.5- 13, W 12.5- 14)

Comfort PF Strap



Indications:

Plantar fasciitis
Heel spurs
General heel pain

Features:

Low-profile design
Fits left or right foot
Fits easily in any shoe

Part #	Size
65-106-2	Small (M 4-8, W 4-8.5)
65-106-3	Medium (M 8.5- 11, W 9- 11.5)
65-106-4	Large (M 12+, W 11.5+)

Functional Air Ankle Brace Sugg HCPC: L4350



Indications:

Acute ankle sprains
Ankle instability
Prophylactic use

Features:

Air chambers with soft foam lining
Minimizes ankle rotation
Fits left or right foot

Part #	Size
CK-307	One size fits all

Air/Gel Stirrup Ankle Brace

Sugg HCPC: L4350



Indications:

- Acute ankle sprains
- Ankle instability
- Prophylactic use

Features:

- Air and gel chambers with soft foam lining
- Minimizes ankle rotation
- Fits left or right foot

Part #	Size
65-108	One size fits all

Comfortland Ankle Gauntlet

Sugg HCPC: L1902



Indications:

- Poor blood circulation
- Pain in the feet

Features:

- Non-slip sole for stability
- Single strap closure
- Increases foot temperature 2-3 degrees

Part #	Size		
CK-319-2	Small (M up to 6, W 4- 6)	CK-319-4	Large (M 9- 11, W 10- 12)
CK-319-3	Medium (M 6- 8, W 7- 9)	CK-319-5	X-Large (M 12+, W 13 +)

COMFORTSTEP ORTHOTICS

Comfortstep is a leading brand of prefabricated orthotic insoles, with unique features and benefits to relieve foot and heel pain caused by the most common foot conditions. They are simple to fit and dispense, and have been accepted by many podiatrists and healthcare providers. Comfortstep carries almost everything needed for proper foot and toe care. In the fast-paced world of healthcare, it is Comfortstep's mission to offer the simplest possible solutions to foot pain.



PRODUCTS

Full Length Premium Orthotics

Sugg HCPC: L3040

3/4 Length Premium Orthotics

Sugg HCPC: L3040

3/4 Length Leather Dress Orthotics

Sugg HCPC: L3040

Full Length Casual Dress Orthotics

Sugg HCPC: L3040

3/4 Length Casual Dress Orthotics

Sugg HCPC: L3040

Performance RX Orthotics

Sugg HCPC: L3040

Heat Moldable Orthotics

Sugg HCPC: L3040

Comfort Performer

Polypro Shell

Diabetic Inserts

Sugg HCPC: A5512

Diabetic Tri-Laminate Inserts

Sugg HCPC: A5512

Adjustable Heel Lift

Heel Wedges

Sugg HCPC: L3350

Comfortland Arch Supports

Metatarsal Pads

Silicone Gel Heel Cups

Sugg HCPC: L3170

Full Length Silicone Gel Insoles

3/4 Length Silicone Gel Insoles

Silicone Gel Sock

Gel Metatarsal Cushion

Gel Forefoot Cushion

Full Length Premium Orthotics Sugg HCPC: L3040

Indications: Over pronation, arch support, general foot pain

Features: Medical-grade polypropylene shell, deep heel cups, increased arch firmness



Part #	Size		
CS-800-A	M 4- 4.5, W 6- 6.5	CS-800-F	M 9- 9.5, W 11- 11.5
CS-800-B	M 5- 5.5, W 7- 7.5	CS-800-G	M 10- 10.5, W 12- 12.5
CS-800-C	M 6- 6.5, W 8- 8.5	CS-800-H	M 11- 11.5, W 13- 13.5
CS-800-D	M 7- 7.5, W 9- 9.5	CS-800-I	M 12- 13
CS-800-E	M 8- 8.5, W 10- 10.5	CS-800-J	M 14- 15

3/4 Length Premium Orthotics Sugg HCPC: L3040

Indications: Over pronation, arch support, general foot pain

Features: Medical-grade polypropylene shell, deep heel cups, increased arch firmness



Part #	Size		
CS-810-A1	M 3- 4.5, W 5- 6.5	CS-810-E1	M 10- 10.5, W 12- 12.5
CS-810-B1	M 5- 6.5, W 7- 8.5	CS-810-F1	M 11- 11.5, W 13- 13.5
CS-810-C1	M 7- 8.5, W 9- 10.5	CS-810-G1	M 12- 14
CS-810-D1	M 9- 9.5, W 11- 11.5		

3/4 Length Leather Dress Orthotics Sugg HCPC: L3040

Indications: Over pronation, arch support, general foot pain

Features: Medical-grade polypropylene shell, genuine leather construction, designed to fit in dress shoes



Part #	Size		
CS-882-A1	M 3- 4.5, W 5- 6.5	CS-882-E1	M 10- 10.5, W 12- 12.5
CS-882-B1	M 5- 6.5, W 7- 8.5	CS-882-F1	M 11- 11.5, W 13- 13.5
CS-882-C1	M 7- 8.5, W 9- 10.5	CS-882-G1	M 12- 14
CS-882-D1	M 9- 9.5, W 11- 11.5		

Full Length Casual Dress Orthotics Sugg HCPC: L3040

Indications: Over pronation, arch support, general foot pain

Features: Medical-grade polypropylene shell, deep heel cups, designed to fit in casual shoes



Part #	Size		
CS-820-A	M 4- 4.5, W 6- 6.5	CS-820-F	M 9- 9.5, W 11- 11.5
CS-820-B	M 5- 5.5, W 7- 7.5	CS-820-G	M 10- 10.5, W 12- 12.5
CS-820-C	M 6- 6.5, W 8- 8.5	CS-820-H	M 11- 11.5, W 13- 13.5
CS-820-D	M 7- 7.5, W 9- 9.5	CS-820-I	M 12- 13
CS-820-E	M 8- 8.5, W 10- 10.5	CS-820-J	M 14- 15

3/4 Length Casual Dress Orthotics

Sugg HCPC: L3040

Indications: Over pronation, arch support, general foot pain

Features: Medical-grade polypropylene shell, deep heel cups, designed to fit in casual shoes



Part #	Size		
CS-822-A1	M 3- 4.5, W 5- 6.5	CS-822-E1	M 10- 10.5, W 12- 12.5
CS-822-B1	M 5- 6.5, W 7- 8.5	CS-822-F1	M 11- 11.5, W 13- 13.5
CS-822-C1	M 7- 8.5, W 9- 10.5	CS-822-G1	M 12- 14
CS-822-D1	M 9- 9.5, W 11- 11.5		

Performance RX Orthotics

Sugg HCPC: L3040

Indications: Over pronation, arch support, general foot pain

Features: Medical-grade polypropylene, odor-fighting insole, designed for strenuous activity



Part #:	Size:		
CS-830-A	M 4- 4.5, W 6- 6.5	CS-830-F	M 9- 9.5, W 11- 11.5
CS-830-B	M 5- 5.5, W 7- 7.5	CS-830-G	M 10- 10.5, W 12- 12.5
CS-830-C	M 6- 6.5, W 8- 8.5	CS-830-H	M 11- 11.5, W 13- 13.5
CS-830-D	M 7- 7.5, W 9- 9.5	CS-830-I	M 12- 13
CS-830-E	M 8- 8.5, W 10- 10.5	CS-830-J	M 14- 15

Heat Moldable Orthotics

Sugg HCPC: L3040

Indications: Over pronation, arch support, general foot pain

Features: Lightweight, durable construction, distributes weight evenly across foot, heat moldable for custom fit



Part #	Size		
CS-850-A	M 4- 5.5, W 6- 7.5	CS-850-F	M 10- 10.5, W 12- 12.5
CS-850-B	M 6- 6.5, W 8- 8.5	CS-850-G	M 11- 11.5, W 13- 13.5
CS-850-C	M 7- 7.5, W 9- 9.5	CS-850-H	M 12- 13, W 14+
CS-850-D	M 8- 8.5, W 10- 10.5	CS-850-I	M 14- 15
CS-850-E	M 9- 9.5, W 11- 11.5		

Comfort Performer

Indications: Over pronation, arch support, general foot pain

Features: Lightweight, durable construction, great diagnostic or temporary orthotic



Part #	Size		
CS-870-2	M 6- 7, W 6- 8	CS-870-5	M 10- 11, W 11- 12
CS-870-3	M 8- 9, W 9- 10	CS-870-6	M 11- 12, W 12+
CS-870-4	M 9- 10, W 10- 11	CS-870-7	M 12- 14

Polypro Shell

Indications: Over pronation, arch support, general foot pain

Features: Medical-grade polypropylene shell, deep heel cups, increased arch firmness



Part #	Size
CS-900-A	X-Small (M 3- 4.5, W 5- 6.5)
CS-900-B	Small (M 5- 6.5, W 7- 8.5)
CS-900-C	Medium (M 7- 8.5, W 9- 10.5)
CS-900-D	Large (M 9- 9.5, W 11- 11.5)
CS-900-E	X-Large (M 10- 10.5, W 12- 12.5)
CS-900-F	XX-Large (M 11- 13, W 13+)

Diabetic Inserts Sugg HCPC: A5512

Indications: General foot pain, ulcer prevention

Features: Dual density construction, contoured for optimum comfort, heat moldable for custom fit



Part #	Size
DR628-XS	X-Small (W 5- 7)
DR628-S	Small (M 6- 7, W 8- 9)
DR628-M	Medium (M 8- 9, W 10- 11)
DR628-L	Large (M 10- 11, W 12- 13)
DR628-XL	X-Large (M 12- 13)
DR628-XXL	XX-Large (M 14- 15)

Diabetic Tri-Laminate Inserts Sugg HCPC: A5512

Indications: General foot pain, ulcer prevention

Features: Dual density construction, contoured for optimum comfort, heat moldable for custom fit



Part #	Size
DR628-T-XS	X-Small (W 5- 7)
DR628-T-S	Small (M 6- 7, W 8- 9)
DR628-T-M	Medium (M 8- 9, W 10- 11)
DR628-T-L	Large (M 10-11, W 12- 13)
DR628-T-XL	X-Large (M 12- 13)
DR628-T-XXL	XX-Large (M 14- 15)

Adjustable Heel Lift



Indications: Leg length discrepancies, heel spurs, achilles tendonitis

Features: High quality rubber construction
2 removable 1/8" thick layers for optimum customization

Part #	Size
63-600-2	Small (W 3- 7.5)
63-600-3	Medium (M 6- 8.5, W 8- 10.5)
63-600-4	Large (M 9+, W 11+)

Heel Wedges

Sugg HCPC: L3350



Indications: Pronation and supination, heel rollover, general heel pain

Features: Firm rubber construction, limits calcaneal eversion, corrects uneven shoe wear

Part #	Size
63-605-3	Medium (M 4- 8, W 6- 10)
63-605-4	Large (M 9+, W 10+)

Comfortland Arch Supports



Indications: Fallen arches, heel pain

Features: Helps to evenly distribute weight across the entire foot,
sold per pair

Part #	Size
63-620-3	Medium (M 4-9, W 6-10)
63-620-4	Large (M 9.5+, W 11+)

Metatarsal Pads



Indications: Metatarsal pain, fat pad atrophy

Features: Adhesive backing for proper positioning, high quality rubber construction,
sold per pair

Part #	Size
63-610-3	Medium (M 4- 8, W 6- 10)
63-610-4	Large (M 9+, W 10+)

Full Length Silicone Gel Insoles



Indications:

Heel spurs
Metatarsal pain
Fat pad atrophy

Features: High quality silicone gel construction
Absorbs shock across entire foot
Can be worn in dress or athletic shoes

Part #	Size
66-100-2	Small (M 6- 7, W 7- 8)
66-100-3	Medium (M 8- 9, W 9- 10)
66-100-4	Large (M 10- 11, W 11- 12)
66-100-5	X-Large (M 12- 13)
66-100-6	XX-Large (M 13+)

3/4 Length Silicone Gel Insoles



Indications:

Heel spurs
Metatarsal pain
Fat pad atrophy

Features: High quality silicone gel construction
Low-profile design
Can be worn in dress or athletic shoes

Part #	Size
66-102-2	Small (W 5- 6)
66-102-3	Medium (M 6- 8, W 7- 9)
66-102-4	Large (M 8.5- 11, W 9.5- 12)
66-102-5	X-Large (M 11- 13)

Silicone Gel Heel Cups Sugg HCPC: L3170



Indications:

Heel spurs
Achilles tendonitis
Arthritis in the leg and knee joints

Features: High quality silicone gel construction
Soft areas on the heel to reduce pain
Can be worn in dress or athletic shoes

Part #	Size
CK-601-2	Small (M 5- 7, W 7- 9)
CK-601-3	Medium (M 8- 10, W 10- 12)
CK-601-4	Large (M 10.5- 12, W 12+)
CK-601-5	X-Large (M 12.5+)

Silicone Gel Sock



Indications:

Cracked heels
Heel calluses

Features: Dual layer construction
Polymer gel locks in moisture
Fits left or right foot

Part #	Size
63-200	One size fits all

Gel Metatarsal Cushion



Indications:

Metatarsalgia
Fat pad atrophy
Morton's neuroma

Features: High quality silicone gel construction
Toe loop to ensure proper placement
More resilient than traditional cushions

Part #	Size
63-520	One size fits all

Gel Forefoot Cushion



Indications:

Heel spurs
Metatarsal pain
Fat pad atrophy

Features: High quality silicone gel construction
Low-profile design
Fits in nearly all footwear

Part #	Size
63-510	One size fits all

COMFORTMAX COMPRESSION STOCKINGS

The Comfortmax compression stockings line is the ultimate combination of comfort and support. Available in various styles, colors, and compression weights, the comfortmax line has something for everyone.



Thigh High Compression Stockings (20- 30mmHG)



Indications:
Muscle weakness
Poor blood circulation

Features: High quality construction
Durable elastic to prevent migration
Made in the USA

Part #	Size
CS-9000-2-T-BG	Small Beige Stocking
CS-9000-3-T-BG	Medium Beige Stocking
CS-9000-4-T-BG	Large Beige Stocking
CS-9000-5-T-BG	X-Large Beige Stocking
CS-9000-6-T-BG	XX-Large Beige Stocking

Thigh High Compression Stockings (30- 40mmHG)



Indications:
Muscle weakness
Poor blood circulation

Features: High quality construction
Durable elastic to prevent migration
Made in the USA

Part #	Size
CS-9002-2-T-BG	Small Beige Stocking
CS-9002-3-T-BG	Medium Beige Stocking
CS-9002-4-T-BG	Large Beige Stocking
CS-9002-5-T-BG	X-Large Beige Stocking
CS-9002-6-T-BG	XX-Large Beige Stocking

Closed-Toe Knee High Compression Stockings (20- 30mmHG)



Indications:
Muscle weakness
Poor blood circulation

Features: High quality construction
Durable elastic to prevent migration
Made in the USA

Part #	Size
CS-9000-2-C-BG	Small Beige Stocking
CS-9000-2-C-BL	Small Black Stocking
CS-9000-3-C-BG	Medium Beige Stocking
CS-9000-3-C-BL	Medium Black Stocking
CS-9000-4-C-BG	Large Beige Stocking
CS-9000-4-C-BL	Large Black Stocking
CS-9000-5-C-BG	X-Large Beige Stocking
CS-9000-5-C-BL	X-Large Black Stocking

Open-Toe Knee High Compression Stockings (20- 30mmHG)



Indications:
Muscle weakness
Poor blood circulation

Features: High quality construction
Durable elastic to prevent migration
Made in the USA

Part #	Size
CS-9000-2-O-BG	Small Beige Stocking
CS-9000-2-O-BL	Small Black Stocking
CS-9000-3-O-BG	Medium Beige Stocking
CS-9000-3-O-BL	Medium Black Stocking
CS-9000-4-O-BG	Large Beige Stocking
CS-9000-4-O-BL	Large Black Stocking
CS-9000-5-O-BG	X-Large Beige Stocking
CS-9000-5-O-BL	X-Large Black Stocking

Closed-Toe Knee High Compression Stockings (30- 40mmHG)



Indications:
Muscle weakness
Poor blood circulation

Features: High quality construction
Durable elastic to prevent migration
Made in the USA

Part #	Size
CS-9002-2-C-BG	Small Beige Stocking
CS-9002-2-C-BL	Small Black Stocking
CS-9002-3-C-BG	Medium Beige Stocking
CS-9002-3-C-BL	Medium Black Stocking
CS-9002-4-C-BG	Large Beige Stocking
CS-9002-4-C-BL	Large Black Stocking
CS-9002-5-C-BG	X-Large Beige Stocking
CS-9002-5-C-BL	X-Large Black Stocking

Compression Socks (20- 30mmHG)



Indications:
Muscle weakness
Poor blood circulation

Features: High quality construction
Durable elastic to prevent migration
Made in the USA

Part #	Size
CS-9000-2-S-BL	Small Black Socks
CS-9000-3-S-BL	Medium Black Socks
CS-9000-4-S-BL	Large Black Socks
CS-9000-5-S-BL	X-Large Black Socks

Open-Toe Knee High Compression Stockings (30- 40mmHG)



Indications:
Muscle weakness
Poor blood circulation

Features: High quality construction
Durable elastic to prevent migration
Made in the USA

Part #	Size
CS-9002-2-O-BG	Small Beige Stocking
CS-9002-3-O-BG	Medium Beige Stocking
CS-9002-4-O-BG	Large Beige Stocking
CS-9002-5-O-BG	X-Large Beige Stocking

Compression Socks (30- 40mmHG)



Indications:
Muscle weakness
Poor blood circulation

Features: High quality construction
Durable elastic to prevent migration
Made in the USA

Part #	Size
CS-9002-3-S-BL	Medium Black Socks
CS-9002-4-S-BL	Large Black Socks
CS-9002-5-S-BL	X-Large Black Socks

UPPER EXTREMITY BRACING

Comfortland offers a comprehensive line of upper extremity bracing, with options for all common situations. From **immobilization of the shoulder, wrist, and thumb** to **rehabilitation of the elbow and shoulder**, Comfortland provides patients and practitioner cost-effective, easy-to-use products that provide top-quality stability and support.



PRODUCTS

8'' Universal Wrist and Thumb Splint

Sugg HCPC: L3807/ L3809

Endeavor Quick-Lace Wrist and Thumb Splint

Sugg HCPC: L3807/ L3809

Premium Wrist and Thumb Splint

Sugg HCPC: L3807/ L3809

Endeavor Quick-Lace Wrist Extension Splint

Sugg HCPC: L3908

8'' Wrist Extension Splint

Sugg HCPC: L3908

Deluxe Universal/Ambidextrous Wrist Splint

Sugg HCPC: L3908

Premium Wrist/Hand Splint

Sugg HCPC: L3915/L3916

Endeavor Deluxe Wrist/Hand Splint

Sugg HCPC: L3915/L3916

Comfortland Deluxe Thumb Spica

Sugg HCPC: L3923/L3924

Comfortland Universal Shoulder Abduction Pillow

Sugg HCPC: L3962

Comfortmax Shoulder/Arm Abduction System

Sugg HCPC: L3960

Premium Elbow Brace

Sugg HCPC: L3760

Comfortland Sling and Swathe

Sugg HCPC: L3670

Comfort Shoulder Stabilizer

Sugg HCPC: L3670

Comfortland Mesh Shoulder Immobilizer

Sugg HCPC: L3660

Shoulder Immobilizer with Waist Strap

Sugg HCPC: L3660

The Comfortland Elbow Splint

Sugg HCPC: L3762

Comfortland Pneumatic Armband

Comfortland Clavicle Strap

Sugg HCPC: L3650

8'' Universal Wrist and Thumb Splint Sugg HCPC: L3807/ L3809



Indications:

De Quervain's syndrome
Gamekeeper's thumb
Carpometacarpal instabilities

Features:

Hook Straps with D-ring closures
Adjustable thumb stay
Unique sizing system fits most wrists

Part #	Size
31-200-L	Universal Left(One size fits all)
31-200-R	Universal Right(One size fits all)

Endeavor Quick-Lace Wrist and Thumb Splint Sugg HCPC: L3807/ L3809



Indications:

De Quervain's syndrome
Gamekeeper's thumb
Carpometacarpal instabilities

Features:

Adjustable thumb stay
Quick-lace closure for easy application
Malleable palmar stay

Part #	Size
31-300-L	Universal Left(One size fits all)
31-300-R	Universal Right(One size fits all)

Premium Wrist and Thumb Splint Sugg HCPC: L3807/ L3809



Indications:

De Quervain's syndrome
Gamekeeper's thumb
Carpometacarpal instabilities

Features:

Hook straps with D-ring closures
Adjustable thumb stay
Malleable palmar stay

Part #	Size	Part #	Size
CK-703-1-L	X-Small Left (4.5"-5.5" wrist)	CK-703-3-R	Medium Right (6.5"-7.5" wrist)
CK-703-1-R	X-Small Right (4.5"-5.5" wrist)	CK-703-4-L	Large Left (7.5"-8.5" wrist)
CK-703-2-L	Small Left (5.5"-6.5" wrist)	CK-703-4-R	Large Right (7.5"-8.5" wrist)
CK-703-2-R	Small Right (5.5"-6.5" wrist)	CK-703-5-L	X-Large Left (8.5"-10" wrist)
CK-703-3-L	Medium Left (6.5"-7.5" wrist)	CK-703-5-R	X-Large Right (8.5"-10" wrist)

Endeavor Quick-Lace Wrist Extension Splint

Sugg HCPC: L3908



Indications:

Carpal tunnel syndrome
Tendonitis
Mild sprains of the wrist

Features:

Lightweight, durable construction
Quick-lace closure for easy application
Narrow webspace prevents pinching

Part #	Size
31-109-L	Universal Left (One size fits all)
31-109-R	Universal Right (One size fits all)

8'' Wrist Extension Splint

Sugg HCPC: L3908



Indications:

Carpal tunnel syndrome
Tendonitis
Mild sprains of the wrist

Features:

Lightweight, durable construction
Hook straps w/ D-ring closures
Narrow webspace prevents pinching

Part #	Size	Part #	Size
CK-702-1-L	X-Small Left (4.5"-5.5" wrist)	CK-702-3-R	Medium Right (6.5"-7.5" wrist)
CK-702-1-R	X-Small Right (4.5"-5.5" wrist)	CK-702-4-L	Large Left (7.5"-8.5" wrist)
CK-702-2-L	Small Left (5.5"-6.5" wrist)	CK-702-4-R	Large Right (7.5"-8.5" wrist)
CK-702-2-R	Small Right (5.5"-6.5" wrist)	CK-702-5-L	X-Large Left (8.5"-10" wrist)
CK-702-3-L	Medium Left (6.5"-7.5" wrist)	CK-702-5-R	X-Large Right (8.5"-10" wrist)

Deluxe Universal/Ambidextrous Wrist Splint

Sugg HCPC: L3908



Indications:

Sprains and strains of the wrist and hand
Carpal tunnel
Rheumatoid arthritis
Osteoarthritis
Colles fracture
Other issues

Features:

Universal sizing
Ambidextrous design fits left or right hand
Moldable rigid palmar stay
Easy to use hook-and-loop quick-lace straps
Lightweight, low profile, and breathable

Part #	Size
31-108	One size fits all

Premium Wrist/Hand Splint

Sugg HCPC: L3915/L3916



Indications:

Carpal tunnel
Osteoarthritis
Rheumatoid arthritis
Pain in the wrist/hand
Other conditions

Features:

Universally sized
Fits either left or right hand
Malleable frame fits almost any patient
Adjustable ROM hinge for flexion and extension
Nylon glove aids in compression
Lightweight, breathable materials

Part #	Size
31-501	One size fits all

Comfortland Deluxe Thumb Spica

Sugg HCPC: L3923/L3924



Indications:

De Quervain's syndrome
Gamekeeper's thumb
Carpometacarpal instabilities

Features:

100% neoprene free and latex free
Controls motion of CMC and MP joints
Allows full finger dexterity

Part #	Size
31-900-3	small/med(4.5"-7.5"wrist)
31-900-4	large/XL(7.5"-10"wrist)

Endeavor Deluxe Wrist/Hand Splint

Sugg HCPC: L3915/L3916



Indications:

Ulnar styloid fracture
Partial rupture of tendon in wrist/hand
Colles fracture
Unspecified pain in wrist/hand
Radius fracture/extensor tendon rupture

Features:

Universal size
Fits left or right
Malleable frame
Adjustable wrist hinge

Part #	Size
31-500	One size fits all

Comfortland Universal Shoulder Abduction Pillow

Sugg HCPC: L3962



Indication:

Rotator cuff, elbow, and shoulder injuries
Adhesive capsulitis/frozen shoulder
Post-op and pre-op

Features:

Universal size and fits left or right arm/shoulder
Provides multiple abduction settings
Lightweight, firm foam
Latex free

Part #	Size
CK-802	Universal

Comfortmax Shoulder/Arm Abduction System

Sugg HCPC: L3960



Indications:

Frozen shoulder
Arthritis of the shoulder
Median, ulnar, and radial neuropathy

Features:

Ambidextrous design fits left or right arm
Telescoping frame fits most arm lengths
Abducts at 15, 30, 60, and 90 degrees

Part #	Size
CK-800	One size fits all

Premium Elbow Brace

Sugg HCPC: L3760/L3761



Indications:

Cubital tunnel syndrome
Dislocation of elbow
Rupture of tendon in elbow

Features:

Lightweight design
Telescoping frame fits most arm lengths
Great alternative to casting or splinting

Part #	Size
CK-700-L	Universal Left(One size fits all)
CK-700-R	Universal Right(One size fits all)

Comfortland Sling and Swathe

Sugg HCPC: L3670



Indications:

Shoulder Injuries
Instabilities
Chronic Pain
Dislocations

Features:

Universal size
Can be used as either a sling or swathe
Fits either left or right
Soft, breathable construction
Hook and loop closure

Part #	Size
21-505	One size fits all

Comfort Shoulder Stabilizer

Sugg HCPC: L3670



Indications:

Postoperative and post-trauma immobilization
Soft tissue injuries
Shoulder instabilities, irritations, dislocations
Rotator cuff injuries and issue

Features:

Ambidextrous design fits left or right arm
High density foam waist cushion
Stress ball to promote circulation
Easy to use and adjust

Part #	Size		
21-203-2	Small (9"-12" from wrist to elbow)	21-203-4	Large (15"-18" from wrist to elbow)
21-203-3	Medium (12"-15" from wrist to elbow)	21-203-5	XLarge (18"-21" from wrist to elbow)

Comfortland Mesh Shoulder Immobilizer

Sugg HCPC: L3660



Indications:

Rotator cuff injuries
Shoulder instabilities
Anterior dislocation (G-H joint)

Features:

Ambidextrous design fits left or right arm
Ventilated mesh construction
Easy to apply and remove

Part #	Size		
21-103-2	Small (13.5" long/ 7.5" sling depth)	21-103-4	Large (18" long/ 8.75" sling depth)
21-103-3	Medium (15.5" long/ 8.25" sling depth)	21-103-5	X-Large (20" long/ 10.25" sling depth)

Shoulder Immobilizer with Waist Strap

Sugg HCPC: L3660



Indications:

Rotator cuff injuries
Shoulder instabilities
Anterior dislocation (G-H joint)

Features:

Ambidextrous design fits left or right arm
Ventilated canvas construction
Easy to apply and remove

Part #	Size
21-101-2	Small (13.5" long/ 7.5" sling depth)
21-101-3	Medium (15.5" long/ 8.25" sling depth)
21-101-4	Large (18" long/ 8.75" sling depth)

The Comfortland Elbow Splint

Sugg HCPC: L3762



Indications:

Cubital tunnel syndrome pain
Tennis elbow
Golfer's elbow
Other elbow instabilities and conditions

Features:

Universal fits right or left arm
Washable
Latex free

Part #	Size
CK-760	One size fits all

Comfortland Pneumatic Armband



Indications:

Golfers elbow (epicondylitis)
Tennis elbow
Cubital tunnel syndrome
Other elbow instabilities

Features:

A single, pre-inflated air cell concentrates compression on the extensor muscle, not around the arm -- providing more support, less constriction. Universal fit.

Part #	Size
CK-708	One size fits all

Comfortland Clavicle Strap

Sugg HCPC: L3650



Indications:

Clavicle fractures
Acromioclavicular separation
Posture control

Features:

Foam/nylon construction
Hook and loop closures for easy adjustment
Adjustable D-rings allows for proper adjustment
Universal, fits up to 42" chest circumference

Part #	Size
DS-15	One size fits all

SPECIAL INTEREST

In an effort to expand our scope of care, Comfortland proudly carries a variety of special interest products designed to treat various conditions that are seen on a regular basis. From hot/cold therapy units to electrotherapy, the Comfortland special interest line features products that are effective and easy-to-use.



PRODUCTS

Thermax Hot/Cold Water Circulation System
TENS3000

Sugg HCPC: E0730

InTENSity 10

Sugg HCPC: E0730

IF 4000

Sugg HCPC: E0730

2"x2" Soft Touch Electrodes

Sugg HCPC: A4595

Premium Lumbar Sacral Support

Deluxe Lumbar Sacral Support

Comfortmax Sport Knee Brace

Comfortmax Sport Ankle Brace

Electrotherapy Conductive Garments

Sugg HCPC: E0731

Thermax Hot/Cold Water Circulation System

The Comfortmax Thermax System(CT-100) provides controlled hot or cold therapy for extended periods, allowing it to effectively reduce swelling and pain after surgery or injury.



CT-100-B



CT-100-U



CT-100-C

Part #: CT-100

Indications: Swelling and pain after surgery or injury

Features: Portable and lightweight
See-through design for easy fill indication
Plug and play makes operation simple
Cold pads to deliver therapy where needed

Accessories:

CT-100 Universal Pad (CT-100-U)

CT-100 Back Pad (CT-100-B)

CT-100 Cervical Pad (CT-100-C)

CT-100 Knee Pad (CT-100-K-L and CT-100-K-R)



CT-100-C



CT-100-K-L and CT-100-K-R

TENS3000 Sugg HCPC: E0730



Indications: Low back pain, post- surgical pain, arthritic pain

Features:

- 0-80 mA output power
- Easy-to-use analog design
- Convenient carrying case

Part #	Size
TN-3000	N/A

IF 4000 Sugg HCPC: E0730



Indications:

- Acute and chronic pain
- Motor nerve and muscle stimulation
- Improving blood circulation

Features:

- Symmetrical bi-phasic square wave
- 4000Hz fixed carrier frequency
- Convenient carrying case

Part #	Size
IF-4000	N/A

2"x2" Soft Touch Electrodes

Sugg HCPC: A4595



Indications:

- To be used with electrotherapy devices

Features:

- Self-adhesive and reusable
- Oval corners minimize curling
- Good for 10-15 uses

Part #	Size
SP-2020	N/A

InTENSity 10 Sugg HCPC: E0730



Indications: Low back pain, post- surgical pain, arthritic pain

Features:

- Easy-to-use digital design
- 10 treatment presets based on body part
- Convenient carrying case

Part #	Size
IN-10	N/A

Deluxe Lumbar Sacral Support



Features: Durable elastic construction, double pull system for stability and control, easy to apply and adjust

Indications: Prophylactic use, support and enhance posture, provides compression and retention to help reduce tension and pain in lower lumbar area

Size	Waist Circumference (Inches:)		Size	Waist Circumference (Inches:)	
LS-200-1	X-Small	26''-32''	LS-200-5	X-Large	44''-48''
LS-200-2	Small	32''-36''	LS-200-6	2X-Large	48''-52''
LS-200-3	Medium	36''-40''	LS-200-7	3X-Large	52''-56''
LS-200-4	Large	40''-44''	LS-200-8	4X-Large	56''-62''

Comfortmax Sport Knee Brace



Indications: Arthrosis, arthritis, ligament instability swelling, postoperative irritations, gonarthrosis

Features: Patella fixation support with integrated silicone and one lateral splint on each side

3D spacer knitted fabric for non-slip fit with every movement

Highly elastic, soft flexion region in the hollow of the knee

Comfortmax wicks away moisture from the body to provide a dry and pleasant feeling on the skin

Part #	Size		
67-100-2	Small(15-16)	67-100-4	Large(19-20)
67-100-3	Medium(17-18)	67-100-5	X-Large(21-23)

Comfortmax Sport Ankle Brace



Indications: Sprains, arthrosis, ligament instability, post cast removal

Features: 3D spacer knitted fabric for non-slip fit with every movement

Compression class II, pressure relief at base of ankle

Extension to side of foot sole to prevent curling

Comfortmax is breathable, soft, lightweight and pleasant to wear

Part #	Size		
67-200-2	Small(8"-9"ankle)	67-200-4	Large(12"-13"ankle)
67-200-3	Medium(10"-11"ankle)	67-200-5	X-Large(14"-15"ankle)
		67-200-6	XX-Large(16"-18"ankle)



CC-12 Conductive elbow



CC-18 Conductive knee



CC-19 Conductive Back



CC-EXT Conductive Extender



CC-20 Conductive Cervical Wrap

Indications:

To be used with
electrotherapy devices

Features:

Durable construction with
pigtail backing for easy use
with most electrotherapy units
Good for repeated uses
without replacement

Part #	Size(One size fits all)
CC-12	Conductive elbow
CC-18	Conductive knee
CC-19	Conductive back
CC-20	Conductive cervical wrap
CC-EXT	Extender

Available Competitive Bid Codes

Item number	PDAC	Item number	PDAC
DL-37	L0650	CK-889	L0643
DL-31	L0648	SI-23	L0623
DL-26	L0641	SI-100	L0621
DL-27	L0642	CK-110	L1833
DL-39	L0651	CK-105	L1812
DL-33	L0649	CK-150 or CK-157	L1830
DL-18X or DL-12X	L0450 or L0457	OA-200	L1851
DL-455X	L0455	CK-207	L1852

CASE QUANTITIES-MOST POPULAR ITEMS

SUGG HCPC	Product Name	Product SKU	Case Quantity
LSO			
L0627/L0642	Delta 27 Back Brace	DL-27	16
L0631/L0648	Delta 31 Back Brace	DL-31	12
L0637/L0650	Delta 37 Back Brace	DL-37	12
L0984	Protective Body Interface	CK-009	M-200, L-120, XL-100
L0456/L0457	Delta 12X	DL-12X	8
CERVICAL			
L0180	Comfortmax Elite Cervical Orthosis	CV-500X	8
E0849	Pneumatic Cervical Traction	CV-900	3
E0855	Comfortland Cervical Traction Unit	CV-1000	4
KNEE/HIP			
L1843/L1851	OA Knee Brace	OA-200	20
L1832/L1833	Comfortland Hinged Knee Brace 12" Exposed Hinge	CK-111	50
L1832/L1833	Universal Comfortland Hinged Knee Brace	CK-110	40
L1832/L1833	Universal Maximum Comfortland Hinged Knee Brace	CK-110X	30
L1820	Universal Hinged Wrap Around	CK-120	40
L1686	Post-Op Rom Hip	CK-686	10
L2397	Comfortland Suspension Sleeve	CK-007	180
ANKLE/FOOT			
L1971	Accord Ankle Brace III	CL-301	32
L4360/L4361	Premium Low Top Air Walker	61-324	S-12, M-12, L-10, XL-8
L4360/L4361	Premium Air Walker	CK-323	S-8, M-8, L-8, XL-6
L4396	Comfort Dorsal Night Splint	CK-304	M-50, L-30
L4396	Posterior Night Splint with Wedge	63-103	S-20, M-15, L-15
L3170	Silicone Gel Heel Cup	CK-601	54
WRIST/HAND			
L3807/L3809	Endeavor Quick-Lace Wrist and Thumb Splint	31-300	54
L3908	Endeavor Quick-Lace Wrist Extension Splint	31-109	60
L3915/L3916	Endeavor Deluxe Wrist/Hand Splint	31-500	30
L3915/L3916	Premium Wrist Hand	31-501	50
L3923/L3924	Comfortland Deluxe Thumb Spica	31-900	200
SHOULDER/ELBOW			
L3660	Shoulder Immobilizer With Waist Strap	21-101	80
L3960	Comfortmax Shoulder/Arm Abduction System	CK-800	8
L3670	Comfort Shoulder Stabilizer	21-203	8
L3760/L3761	Premier Elbow Brace	CK-700	30



To Our Customer

At Comfortland, as with any successful partnership, please let us know how we can work better with you. We strive for continuous improvement based on customer input, and we look forward to hearing from you.

How To Order

Phone: 1.866.277.3135 Fax: 1.866.277.4412 Email: orders@comfortlandmed.com

Shipping

We offer all levels of delivery services, from standard ground to overnight shipping.

Warranty


Guaranteed for 90 days against manufacturer defects or craftsmanship.


Returns

Before returning or exchanging products, please contact customer care. No returns will be accepted after 120 days from the purchase date. All returns are subject to a 15% re-stocking fee. Please contact customer service for more details.



 : 709 AO Smith Road, Mebane, NC 27302

 : 866.277.3135

 : 866.277.4412

 : www.comfortlandmed.com

 : orders@comfortlandmed.com